

Imagine.

Imagine a world where every child develops into a productive, healthy and happy adult.

Join and inform the dialogue to make this a reality.

In conjunction with the Robert Wood Johnson Foundation, the Buffett Early Childhood Institute and Hope Street Group, a diverse group of thought leaders and early childhood experts convened for two days in December at the University of Nebraska Omaha campus to stimulate a community of learning and dialogue on the significance of increasing awareness of a key facet of early education and care: social-emotional development (SED).

Experts in health, education, policy and data.
Pediatricians. Authors. Media and Outreach Influencers.
Philanthropists. Technologists. Business & Public Leaders.

SED Convening Participants

All Our Kin	George Kaiser Family Foundation	Pennsylvania State University
American Academy of Pediatrics	Dr. Harvey Karp (pediatrician, author of <i>The Happiest Baby</i>)	Primrose Schools
Brookings Institution	Hope Street Group	Re-EnvisionED
Buffett Early Childhood Fund	Dr. Laura Jana (pediatrician/author/child care expert)	Robert Wood Johnson Foundation
Buffett Early Childhood Institute	Mississippi KIDS COUNT	Rosemary Wells (NY Times Bestselling children's book author)
Center on Media and Child Health	MomsRising	Save the Children
Child Care Aware® of America	National Association for Family Child Care (NAFCC)	Too Small to Fail
City of New York's Administration for Children's Services	Neimand Collaborative	University of Nebraska Foundation
Council for a Strong America	Parents as Teachers	YMCA
Crittenton Children's Center		Zero to Three

Who else needs to join the dialogue? [Share here](#)

**SED is crucial for young children
from birth to five.**



The group agreed that while the early education and care field stands to play a critically formative role in children's SED, it is deeply fragmented; not properly equipped with resources; and inadequately supported by both the public and policymakers, who currently lack the necessary sense of urgency to optimally help children thrive.

By investing in this issue now, we can
advance greater well-being for
children across the U.S.

What are others saying about SED?



“Early experiences and the environments in which children develop in their earliest years can have lasting impact on later success in school and life.”

– Center on the Developing Child, Harvard University

“Quality early education is as essential for a productive 21st century workforce as roads or the internet; investing in it grows the economy.”

– MIT Workplace Center

“It’s not just about the self—it’s also about empathizing with other people and relationships.”

– Dr. Laura Jana, Director of Innovation, University of Nebraska College of Public Health

**Let's create
a national vision.**



The group agreed on the need for a broader and bolder national vision in order for all stakeholders to understand what SED is, the enormous impact it can play and how it can be fostered early to ensure that it serves as a foundationally strong component of every child's life.

We can ignite around a shared mission that SED be integrated in early education and child care, health care, social services and children's homes in a manner that is informed, responsive and effective.

Across the settings, the group identified a multitude of stakeholders and barriers to SED advancement. A snapshot follows:

STAKEHOLDERS

PRIMARY

- Parents
- Children
- Early education and child care providers



INFLUENCERS

- Policy makers and regulators
- Researchers
- Technology
- Media
- Culture of origin and community
- Business and community leaders

BARRIERS

NEED FOR

- Affordable access and availability
- Accountability
- Shared vision, language and goals
- Community and national integration
- Research to support SED long-term impacts



- Inconsistent regulations, funding streams and workforce quality
- Devaluation of low income parents and providers



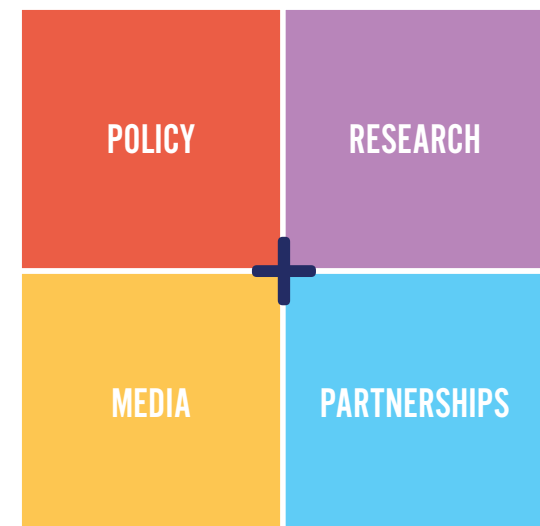
Are you a parent or an education and child care provider? Share your story here

“How do we build the strength, the confidence, the resilience to take the risks necessary to try new things, to be creative and to learn, so that we can innovate into the future?”

– Dr. Michael Rich, Center on Media and Child Health

FIRST, we get started.

The group ideated starter solutions across four prioritized areas.



MAXIMIZE

POLICY

Integrate SED into current policies. Create new policies that support SED integration. Leverage resources and existing policies to maximize SED integration.

HOW?

- Build relationships with state and national policy makers
- Incentivize policy makers by providing transparent data on economic benefits, public savings and long-term prosperity



- Increase impact by connecting with multiple government agencies

[Share your policy ideas](#)

CENTRALIZE

RESEARCH

Create a common research portal so that best practices and effective SED techniques can be easily replicated.

HOW?

- Source and catalogue the data, research and best practices per audience

PARENTS
RESEARCHERS
PROVIDERS



- Make a playbook to encourage more dialogue between stakeholders
- Target and curate more research on interaction between technology and SED implementation

[Share relevant research on effective SED](#)

MOBILIZE

MEDIA

Construct a comprehensive media strategy for a national campaign on SED that creates a sense of urgency, builds accountability and garners resources for long-term change.

HOW?

- Develop unified messaging that is easily translatable to the broader public
 - ☑ "HEALTHY KIDS" ☑ "SOCIAL-EMOTIONAL DEVELOPMENT"
- Utilize creativity, innovation and technology to effectively design, market and implement campaign



[Join the next conversation on Twitter](#)

FORMALIZE

PARTNERSHIPS

Amplify and join the organizations working to engage a multitude of public and private partners to formally champion SED as essential to our overall health and economic outcome.

HOW?

- Integrate SED into other aspects of economic mobility and opportunity
- Build the business case and ROI for private sector engagement and accountability
- Demonstrate the investment, value proposition and time needed to build diverse cross-sector community collaboratives
- Integrate technology and data experts to strengthen SED applications and tools
- Convene various stakeholders including community leaders, pediatricians, parents and others to stimulate partnership and coalition developments



[Share this on social media](#)

The Omaha convening identified actionable solutions to consider as we move forward to advance SED across the country.



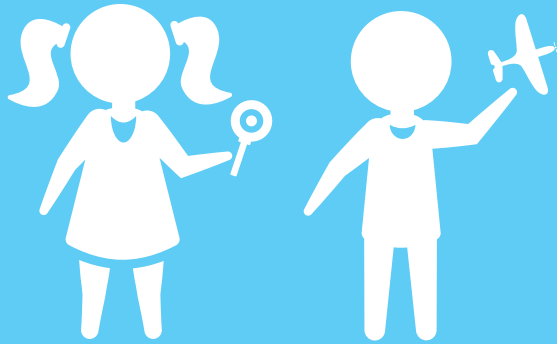
How urgent are each of these steps? Rank them here

- Establish a consistent network of early child care experts and practitioners
- Create a research hub for wide audiences
- Construct a national media campaign
- Develop playbooks for the community to work together
- Advance policy and advocacy coalitions
- Facilitate policy sector integration
- Professionalize the child care workforce

[Click here](#) to get involved

These initiatives will take time and significantly more input from other stakeholders and leaders like you.

[Download](#) the full brief from the Omaha convening



Here is what you can do right now
to help build a better future for every child:

Join and inform the dialogue

Share this on social media

Share your story

Share effective practices and relevant research for quality SED